

# SafeTANK

## SL5640-LB2

---

### User's Guide



## Table of Contents

### Chapter 1 Hardware devices

- 1.1 Accessories and SL5640-LB2 at a glance
- 1.2 LCD message and light indicators
- 1.3 Hardware installation

### Chapter 2 Initial setup

### Chapter 3 Introduction to user interface

- 3.1 Structure of user interface
- 3.2 Login
- 3.3 Systems management
  - 3.3.1 Disk / RAID setup
    - 3.3.1.1 Disk and disk space
    - 3.3.1.2 Information: display hard disk relevant information
  - 3.3.2 Device name
  - 3.3.3 Setup date and time
  - 3.3.4 Language
  - 3.3.5 Network setup
  - 3.3.6 Buzzer / fan setup
  - 3.3.7 Power management
  - 3.3.8 Event log
  - 3.3.9 System settings backup and master reset
  - 3.3.10 Firmware update
  - 3.3.11 Systems information
  - 3.3.12 iSCSI
- 3.4 Permission management
  - 3.4.1 User
  - 3.4.2 Group
  - 3.4.3 Public folder
  - 3.4.4 Window AD
- 3.5 Permission management
  - 3.5.1 Apple network
  - 3.5.2 Linux NFS service
  - 3.5.3 FTP
  - 3.5.4 SSH
- 3.6 Application services
  - 3.6.1 Path for download
  - 3.6.2 File manager
  - 3.6.3 Multimedia service
  - 3.6.4 Cloud Server (SyncBox)
- 3.7 External device
  - 3.7.1 USB drive
  - 3.7.2 USB printer

### Chapter 4 Appendices

Appendix A: BT downloads

Appendix B: AjaXplorer Windows Explorer

Appendix C: cloud server Syncbox

Appendix D: SearchNAS.exe (for Windows OS only)

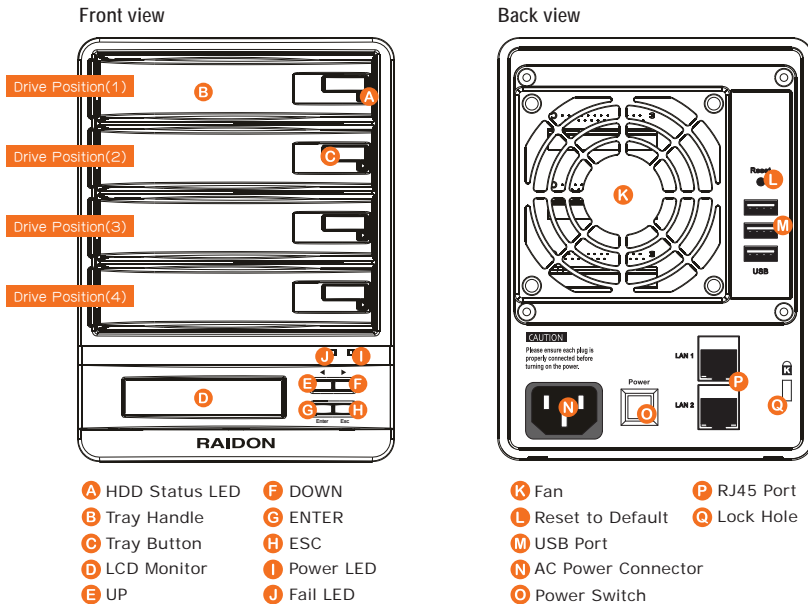
## Chapter 1 Hardware devices

### 1.1 Accessories and SL5640-LB2 at a glance

Your shipment package shall contain the components listed below:

- SL5640-LB2 main body
- AC power cord
- Network cable
- Quick installation guide
- CD (this Guide)
- Parts package

Please ensure that the SL5640-LB2 and its accessories are contained in the package and are not damaged. Contact your dealer or sales representative for any uncertainties.



Note:

- ※ After the Gigabit LAN port is connected to a Gigabit LAN, the light indicator to the left turns a steady green while the one to the right turns orange.
- ※ Press and hold the Reset key for 5 seconds to reset the system back to the factory default setting after your system is in ready status.
- ※ SL5640 dual Gigabit LAN Port, mainly as a Hub functions as a network expansion interface, a network device can be connected through the SL5640.
- ※ Do not connect two Gigabit LAN at the same time, this will result in the SL5640 unable to connect to the network, select one Gigabit LAN Port can use.

## 1.2 LCD message and light indicators

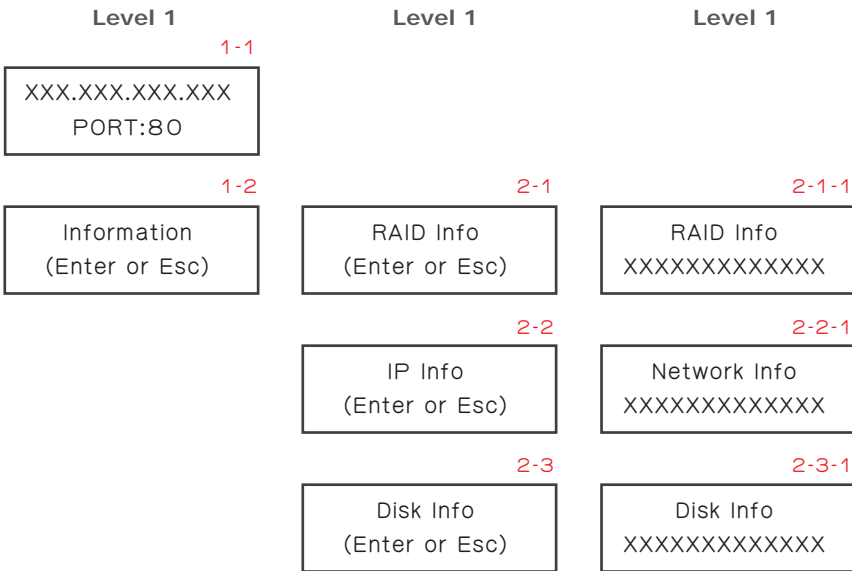
1. SL5640 LCD key and LCD messages  
>LCD key

Left/right: toggle switch between left and right

ESC: back to last page  
Enter: OK and go to the next page

>LCD message

LCD message tree and description



LCD message tree overview

- 1-1 Main screen: display IP address
- 1-2 System information
- 2-1 RAID message
  - 2-1-1 Display information on existing disk arrays
- 2-2 Network information
  - 2-2-1 IP address of DHCP server
- 2-3 Disk information
  - 2-3-1 The underlying message of the hard disk

## 2. Light indicator

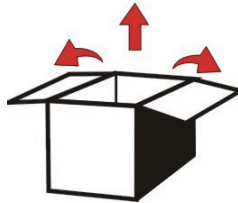
SL5640-LB2

Status	Light indicator
Power on/standby	Power light turns blue
Data access	HDD light flashes blue
Fan failure	Failure light turns red
Overheat (System temperature above 55°C or CPU temperature above 85°C)	Failure light turns red
Hard disk failure	HDD light turns red
Rebuilding	HDD light flashes blue

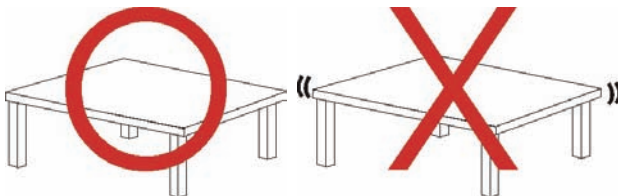
## 1.3 Hardware installation

Install your SL5640 product by following the steps described below:

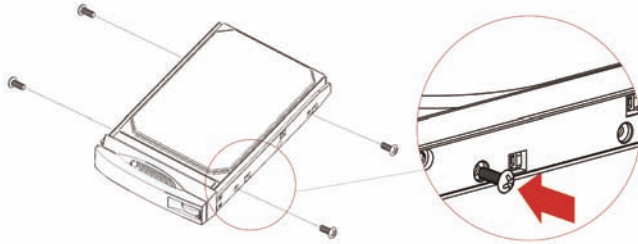
Step 1 Remove your product from the shipping package. (Please ensure that the SL5640-LB2 and its accessories are in the package and not damaged. Contact your dealer or sales representative for any uncertainties.)



Step 2 Place your product on a flat and stable surface. Make sure that the ventilation fan is not blocked and adequate clearance is kept around your product. (Please keep your product away from water or any environment that can damage the product.)



Step 3 Remove the tray and install the hard disk in it. Make sure that your hard disk is locked with screws to the tray to avoid any damage to the hard disk caused by unexpected movements.



Step 4 Insert the tray back into place and lock it firmly at the proper location.

Step 5 Connect your product to a Gigabit LAN through the Gigabit LAN port. Connect the power cord.

Step 6 Power on your product for the required setup and application.

Step 7 See Chapter 3 on setting up your product for the relevant management interface.

## Chapter 2 Initial setup

Your SL5640 product employs a GUI for system management and setup. It takes about 1~2 minutes for your SL5640 to start up. Your SL5640 cannot be discovered by your system before it has been started.

**Step 1:** Open your browser and enter the IP address

(a) To use auto IP (IP address assigned by the DHCP server):

After being connected to a local area network and powered on, the LCM displays the assigned IP address. Open your browser and type the IP address to enter the Web GUI for setup.

You may use an IP detection utility (e.g., the SearchNAS.exe includes a CD with operating instructions contained in Appendix D) to search for the IP address assigned to SL5640.

(b) To use static IP:

Your SL5640 product has a default IP address of 192.168.1.20. Please change the IP address of the PC connected with your product to be in the same network segment (e.g., 192.168.1.xxx) before opening your browser. Type in the default IP address to enter the Web GUI for setup and change the IP address of the SL5640. See Chapter 3 on changing the IP address.

Note:

The SearchNAS.exe software contained in the CD supports the Windows system only.

**Step 2 :** Enter the login screen

The login screen will be displayed after the IP address has been entered. Enter your account, password and verification code to go to the setup screen.

Default account and password

User name: admin

Password: admin

**Step 3 :**

When using your SL5640 product for the first time, you are required to select one standalone hard disk or create one disk array before doing other setup operations. Click on the Hard disk/RAID Setup in the System Management to display the list of hard disks existing in the SL5640. Click on one of the four options in the Hard Disk Management to set up the desired disk array. Once the disk array is created in the system reboot, you can then make another setup after logging in the system again. See Chapter 3 for further information on the system setup.



## Chapter 3 Introduction to user interface

### 3.1 Structure of user interface

See table below for the structure of user interface:

Systems management	Disk drive / RAID setup
	Device name
	Date and setup time
	Language
	Network setup
	Buzzer / fan setup
	Power management
	Event log
	Systems settings backup and master reset
	Firmware update
	System message
	iSCSI
Permission management	User
	Group
	Public folder
	WINDOWS AD
Network service	Apple network
	Linux NFS service
	FTP
	SSH
Application service	Download path
	File manager
	Multimedia service
	Cloud server (SyncBox)
External device	USB disk drive
	USB printer

## 3.2 Login

Your SL5640 product manages the system with a GUI. The diagrams listed below are illustrated based on Internet Explorer 8.0. The diagrams may vary with different browser software.

Open the browser program and type in the IP address shown in the LCD.

Default account and password

User name: admin

Password: admin



Click on options in the function setup pane to the left of the screen for various setup operations after logging in successfully.



**Note:** When using your SL5640 product for the first time, you are required to select one standalone hard disk or create one disk array before doing other setup operations.

## 3.3 Systems management

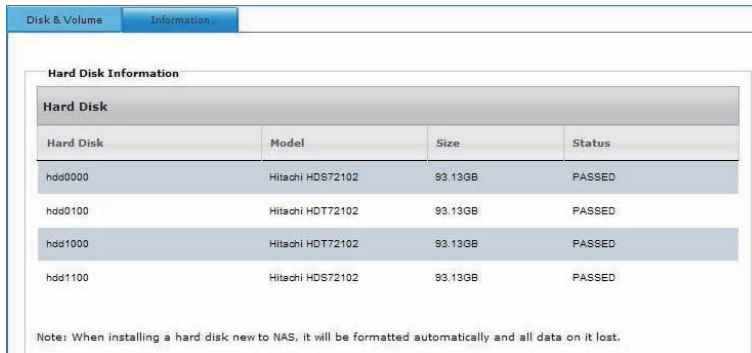
Set up the basic SL5640 function in the systems management screen

### 3.3.1 Disk / RAID setup

#### 3.3.1.1 Disk and disk space

##### (1) Hard disk information

This screen displays the hard disk information including the brand and model number, capacity and disk status. The status of the hard disk is shown in the status column. You may select the Information tab to view the relevant information.




Hard Disk	Model	Size	Status
hdd0000	Hitachi HDS72102	93.13GB	PASSED
hdd0100	Hitachi HDT72102	93.13GB	PASSED
hdd1000	Hitachi HDT72102	93.13GB	PASSED
hdd1100	Hitachi HDS72102	93.13GB	PASSED

Note: When installing a hard disk new to NAS, it will be formatted automatically and all data on it lost.

##### (2) Hard disk management

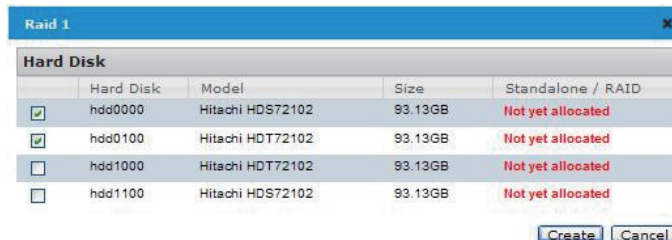
Your SL5640 product supports the standalone hard disk (JBOD) as well as the RAID 0 / RAID 1 / RAID 5 disk array application level.



**Hard Disk Management**

- Standalone hard disk: Set up standalone disk for independent use
- RAID0 (striping): Selection made of two or more hard drives RAID 0 volume
- RAID1 (mirroring): Selection made of two hard drives RAID 1 volume
- RAID 5 volume: Selection made of three or more hard disk RAID 5 volume

Click to display the hard disk menu, select the number of the hard disk that fits the given mode, press Create to start the hard disk formatting and RAID system setup.

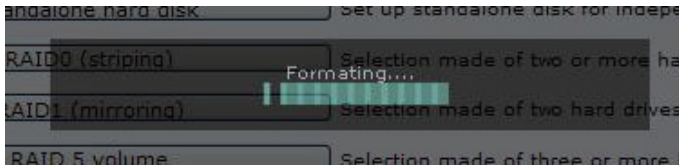


Hard Disk	Model	Size	Standalone / RAID
<input checked="" type="checkbox"/> hdd0000	Hitachi HDS72102	93.13GB	Not yet allocated
<input checked="" type="checkbox"/> hdd0100	Hitachi HDT72102	93.13GB	Not yet allocated
<input type="checkbox"/> hdd1000	Hitachi HDT72102	93.13GB	Not yet allocated
<input type="checkbox"/> hdd1100	Hitachi HDS72102	93.13GB	Not yet allocated

After a hard disk has been created you are prompted to format it



Click on OK to start the disk formatting. The format operations may take some time, please wait for a while. A progress bar along with the Formatting message displays during formatting. Your SL5640 product restarts after a hard disk has been formatted.



### (3) Disk group

Existing disks are shown here with the standalone hard disk with an ID of sda, sdb and so on and a disk array with an ID of md1, md2 and so on.

- Standalone hard disk: Select one for formatting.

**Disk Group**

Disk Volume/RAID							
Mode	Device	Size	Type	Hard	Status	Rebuild	Action
				Disk			
Standalone	/dev/sda	920.3G	EXT4	hdd1000	N/A		Remove

- RAID 0: Select 2 or 4 hard disks for this.

**Disk Group**

Disk Volume/RAID							
Mode	Device	Size	Type	Hard	Status	Rebuild	Action
				Disk			
Raid0	/dev/md1	1847.76GB	EXT4	hdd1000 hdd1100	Clean		Remove

- RAID 1: Select 2 hard disks for this

**Disk Group**

Disk Volume/RAID							
Mode	Device	Size	Type	Hard Disk	Status	Rebuild	Action
Raid1	/dev/md1	85.50GB	EXT4	hdd0000 hdd0100	Clean		<a href="#">Remove</a>

[Migration Disk](#) (Only for RAID 1 mode)

Migration: In case there is any un-allocated hard disk with a volume greater than that of the current RAID 1 in the RAID1 mode, a Migration option displays at the bottom of the screen. You may select one of the un-allocated hard disks to upgrade the existing RAID 1 to the RAID 5 level.

**Disk Group**

Disk Volume/RAID							
Mode	Device	Size	Type	Hard Disk	Status	Rebuild	Action
Raid1	/dev/md1	85.50GB	EXT4	hdd0000 hdd0100	Clean		<a href="#">Remove</a>

[Migration Disk](#) (Only for RAID 1 mode)

**Hard Disk**

	Hard Disk	Model	Size	Standalone / RAID
<input checked="" type="checkbox"/>	hdd1000	Hitachi HDT72102	93.13GB	Not yet allocated
<input type="checkbox"/>	hdd1100	Hitachi HDS72102	93.13GB	Not yet allocated

[Create](#) [Cancel](#)

RAID 5 volume Selection made of three or more hard disk RAID 5 volume

Please wait

**Disk Group**

Disk Volume/RAID							
Mode	Device	Size	Type	Hard Disk	Status	Rebuild	Action
Raid5	/dev/md1	85.50GB	EXT4	hdd0000 hdd0100	Clean, Degraded, Recovering	<a href="#">Rebuild</a>	<a href="#">Remove</a>

[Migration Disk](#) (Only for RAID 1 mode)

**Disk Group**

Disk Volume/RAID							
Mode	Device	Size	Type	Hard Disk	Status	Rebuild	Action
Raid5	/dev/md1	171.00GB	EXT4	hdd0000 hdd0100 hdd1000	Clean		<a href="#">Remove</a>

[Add Hard Disk](#) (Only for RAID 5 mode)

Note:

1. DO NOT power off the system or do any operations during migration and be patient. The system will restart automatically after the migration is successfully completed. The time required for migration varies with the disk volume.
2. In case you need to replace the hard disk in the RAID 1 mode, please power off the system in advance.
3. Insert a new HDD and power on the system, click on the Rebuilding icon and select HDD in the Disk Group window to rebuild the data in the new hard disk. DO NOT power off the system or do any operations during rebuilding and be patient. The system will restart automatically after the rebuilding operation is successfully completed. The time required for rebuilding varies with the disk volume.

RAID 5: Select 3 or 4 HDD for it.

**Disk Group**

Disk Volume/RAID							
Mode	Device	Size	Type	Hard Disk	Status	Rebuild	Action
Raid5	/dev/md1	171.00GB	EXT4	hdd0000	Clean		<a href="#">Remove</a>
				hdd0100			
				hdd1000			

[Add Hard Disk](#) (Only for RAID 5 mode)

Adding a hard disk: In case your RAID 5 volume is composed of three hard disks and there is any un-allocated hard disk with a volume greater than the lowest capacity of the three hard disks in the existing RAID5 mode, an Add Hard Disk option will be displayed at the bottom of the screen. You may select one of the un-allocated hard disks to add in the existing RAID 5 (from 3 to 4 hard disks) for an expanded RAID capacity.

**Disk Group**

Disk Volume/RAID							
Mode	Device	Size	Type	Hard Disk	Status	Rebuild	Action
Raid5	/dev/md1	171.00GB	EXT4	hdd0000	Clean		<a href="#">Remove</a>
				hdd0100			
				hdd1000			

[Add Hard Disk](#) (Only for RAID 5 mode)

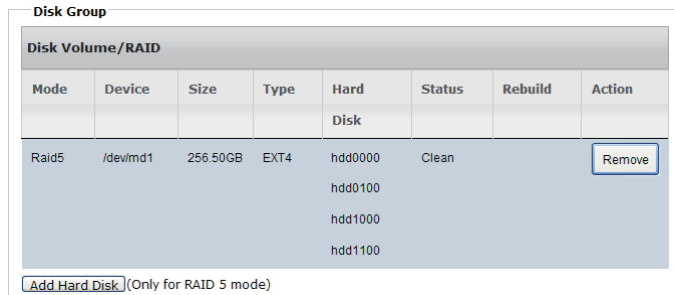
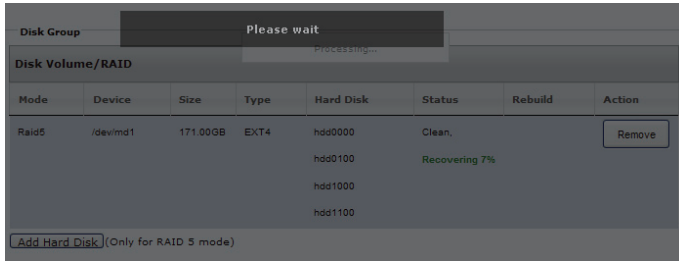
**Add** ✕

Do not power off or run any operation on the device during executing following operation.

**Hard Disk**

Hard Disk	Model	Size	Standalone / RAID
<input checked="" type="checkbox"/> hdd1100	Hitachi HDS72102	93.13GB	Not yet allocated

[Add](#) [Cancel](#)



Note:

1. DO NOT power off the system or do any operations during the adding disk operation and be patient. The system will restart automatically after the adding disk operation is successfully completed. The time required for adding a disk varies with disk volume.
2. In case of any disk failure, the control panel alarm light indicator will turn red and a short beep will sound.
3. In case you need to replace the hard disk in a RAID 5 mode, please power off the system in advance.
4. Insert a new HDD and power on the system, click on the Rebuilding icon and select HDD in the Disk Group window to rebuild the data in the new hard disk. DO NOT power off the system or do any operations during rebuilding and be patient. The system will restart automatically after the rebuilding operation is successfully completed. The time required for rebuilding varies with 0the disk volume

### 3.3.1.2 Information: display hard disk relevant information

Device: /dev/sdb	
Attribute	Value
Device Model	Hitachi HDS721010CLA332
Serial Number	JP2921HQ2271UA
Firmware Version	JP40A39C
User Capacity	1000.2 GB
ATA Version is	8
ATA Standard is	ATA-8-ACS revision 4
Local Time is	Mon Feb 25 17:05:09 2013 CST
SMART support is	Available - device has SMART capability.
SMART support is	Enabled

[SMART](#)

Click on SMART key to enter the information screen

Device: /dev/sdb (passed)

ID#	ATTRIBUTE_NAME	VALUE	WORST	THRESH	TYPE	UPDATED	WHEN_FAILED	RAW_VALUE
1	Raw Read Error Rate	100	100	010	Pre-fail	Always	OK	0
2	Throughput Performance	138	138	054	Pre-fail	Offline	OK	95
3	Spin Up Time	117	117	024	Pre-fail	Always	OK	325 (average 321)
4	Start Stop Count	100	100	000	Old Age	Always	OK	537
5	Reallocated Sector Ct	100	100	005	Pre-fail	Always	OK	0
7	Seek Error Rate	100	100	087	Pre-fail	Always	OK	0
8	Seek Time Performance	132	132	020	Pre-fail	Offline	OK	34
9	Power On Hours	100	100	000	Old Age	Always	OK	877
10	Spin Retry Count	100	100	080	Pre-fail	Always	OK	0
12	Power Cycle Count	100	100	000	Old Age	Always	OK	379
192	Power-off Retract Count	100	100	000	Old Age	Always	OK	563
193	Load Cycle Count	100	100	000	Old Age	Always	OK	563
194	Temperature Celsius	214	214	000	Old Age	Always	OK	28 (min/max: 15/47)
196	Reallocated Event Count	100	100	000	Old Age	Always	OK	0
197	Current Pending Sector	100	100	000	Old Age	Always	OK	0
198	Offline Uncorrectable	100	100	000	Old Age	Offline	OK	0
199	Ultra CRC Error Count	200	200	000	Old Age	Always	OK	0

[Disk Info](#)

### 3.3.2 Device name

You can assign a unique name for your SL5640 product in a local area network

**System**

System Name:

System Communication Port:

### 3.3.3 Setup date and time

Set up the system date, time, time zone and NTP server on this screen.

**Date and Time Setup**

Time Zone:

Date Format:

Time Format:

Manual Setting

Date/Time :

Synchronize with an internet time server automatically

Server:

Time Interval:

The Network Time Protocol (NTP) server synchronizes the time of your host machine through the Internet. You may select either one of the two NTP servers provided by the system : time.windows.com by Microsoft and time.nist.gov by The U.S. National Institute of Standards and Technology.



### 3.3.4 Language

The system automatically selects a language based on the language used by your browser. There are six available options: Traditional Chinese, Simplified Chinese, English, German, Russian and Korean.

**Language**

Display Language: English ▼

### 3.3.5 Network setup

You may get network setup information or set up a network IP address here. The systems default value is DHCP.

Obtaining an IP address automatically

If a DHCP server is available, the system automatically gets an IP address from DHCP server. In case the IP address cannot be assigned automatically the default address is 192.168.1.20.

Using a static IP address

Please consult your network administrator for the IP address, subnet mask and default gateway and fill in the required fields.

Automatically obtaining a DNS server address

Your system automatically gets a DNS server's IP address from DHCP server.

Using a static DNS server address

Please consult your network administrator for a DNS IP address and fill in the required field.

**IP Address**

Lan Port	DHCP	IP Address	Subnet Mask	Gateway	MAC Address	Speed	MTU	Link
eth0	Y	10.1.2.63	255.255.255.0	10.1.2.1	00:14:D7:11:11:A4	1000Mb/s	1500	Active

**Network Configuration setup**

Use Dynamic IP Address

Use Static IP Address:

Static IP Address:

Sub Network Mask:

Gateway:

**DNS Server**

Obtain DNS server address automatically

Use the following DNS server address:

Primary DNS Server:

Secondary DNS Server:

#### Note:

After your SL5640 product is connected to a network, it automatically gets its IP address from the DHCP server. Otherwise, it sets its IP address to the default one (192.168.1.20). You can access the system login screen only with a PC in the same network segment.

You may employ an IP address searching software to find the IP address of your SL5640 product. Please refer to Appendix D.

### 3.3.6 Buzzer / fan setup

Set to mute the buzzer and the display speed of fan on this screen. In case of fan failure, its speed is displayed in red zero "0" and to mute status. The control panel alarm light indicator turns red and sounds two short beeps.

**Buzzer Control**

Activate the muting

**Fan speed message**

Current fan speed is 2520 rpm

### 3.3.7 Power management

You may restart or power off your SL5640 product on this screen

**Restart / Shutdown**

Execute system restart / shutdown immediately

### 3.3.8 Event log

There are five event categories available here: System, Samba, FTP, AFP, and Ajaxplorer. Please remove all entries regularly as the system may take a very long time to retrieve the required information.

event logs

system ▾

**Show** 10 ▾ **entries**
**Search:**

Serial ▾	Message
000001	Feb 26 00:58:41 syslogd started: BusyBox v1.18.5
000002	Feb 26 00:58:41 kernel: klogd started: BusyBox v1.18.5 (2011-10-05 02:59:27 WIT)
000003	Feb 26 00:58:41 kernel: host /interrupt-controller0 mapped to virtual irq 17

### 3.3.9 System settings backup and master reset

#### Backup system settings

Keep and save the current systems settings in a hard disk.

##### System Backup Setup

Please click [Backup] to back up system settings. Select [Save] when prompted with Open or Save backup image file.

Backup

#### Restoring systems settings

You can restore previous backup settings in case the current one is damaged, lost or modified incorrectly. Give the location of setup file and click on Restore to restore the settings to the earlier backup.

##### Restore System Settings

To restore system settings, please click [Browse...] to select desired image file and click [Restore] to confirm.

Browse...

Restore

#### Resetting to factory default

Press Reset to reset the systems setup back to factory default. All systems settings, including the user and network are reset to the factory value. The systems login account and password are also reset to admin/admin.

##### Restore to Factory Default

Caution: When you press [Reset] on this page, all system settings are cleared and restored to default.

To be safe, make sure you back up all important data and system settings before resetting the NAS.

Reset

### 3.3.10 Firmware update

This page displays the current firmware edition.

Online notice for firmware upgrade

Once this function is enabled, your system automatically detects and determines if the current system firmware is the latest one while the network is connected. If not, the firmware will be updated automatically by clicking on the Update icon.

##### Firmware online upgrade notice

Enable

Current Firmware Version: **20130201\_1557**

This firmware version is already the latest.

Current Syncbox Version:

This Syncbox firmware version is already the latest.

Upgrade

## Firmware updates

You may download the latest firmware release to your computer and update your systems firmware by specifying the update file path and after selecting the Navigating option. All network services are stopped during firmware updating. The system restarts automatically after the firmware has been updated successfully.

### Firmware version upgrade

Firmware Version: **20130201\_1557**

1. Before updating system firmware, back up all disk data on the server to avoid any potential data loss during system update.

2. Click the [Browse...] button to select the correct firmware image for system update. Click the

[Update] button to update the firmware.

## Cloud server firmware updates

The cloud server firmware differs from the systems one and is not pre-installed in your product. To install the cloud server firmware, select and install the firmware contained in the CD included with your SL5640 product. See Appendix C on how to use the cloud server.

### Syncbox firmware version upgrade

Syncbox firmware version:

Click the [Browse...] button to select the correct firmware image for system update. Click the

[Update] button to update the firmware.

### Syncbox firmware version upgrade

Syncbox firmware version: **20121204-1758**

Click the [Browse...] button to select the correct firmware image for system update. Click the

[Update] button to update the firmware.

Note: DO NOT update your system firmware without proper planning as this may lead to systems failure. Please do not update your systems firmware if your system is running normally.

### 3.3.11 Systems information

Three types of system information are shown as:

- (1) Systems information: displays systems name, firmware edition, CPU and systems running time since the last power on.

System information	
System name	RAIDON-1111A4
Firmware Version	20130201_1557
CPU	APM82181
Booting time	0DAY(S) 0HOUR(S)

- (2) Hardware information: displays the CPU utilization rate, total memory capacity, total free memory capacity, system temperature, CPU temperature and the number of packets received and sent.

Hardware information	
CPU usage rate	31%
Total memory space	504 MB
Total free memory space	52 MB
System temperature	28
CPU temperature	34
Number of packets received	8 Bytes/sec
Number of packets sent	1 Bytes/sec

\* In case the systems temperature tops 55°C or the CPU temperature tops 85°C, the control panel alarm light indicator turns red and sounds three short beeps

\* In case the system temperature tops 75°C or the CPU temperature tops 95°C, the system turns off automatically to protect your machine

- (3) Network information: displays information including the IP address and Mac address.

Network information			
Lan Port	Communication port status	IP Address	MAC Address
eth0	Active	10.1.2.63	00:14:D7:11:11:A4

Note:

In case the CPU temperature tops 90°C, the system turns off automatically to protect your system and data.

### 3.3.12 iSCSI

You may enable and set up the iSCSI service here. You can then use the iSCSI disk drive as your local disk. The iSCSI setup varies with individual operating systems. Please refer to each OS for the required iSCSI setup.

**iSCSI Service**

Enable iSCSI target service

- (1) Quick setup: create target and disk drive at the same time;
- (2) Target creation: create one iSCSI target;
- (3) Disk drive creation: create one iSCSI disk drive.

**iSCSI setup**

Create iSCSI target and disk

Create one iSCSI target

Create one iSCSI disk

Existing targets appear in the iSCSI target list along with the number of iSCSI disk drives in each target. You can rename, verify settings of and delete selected targets.

**iSCSI management**

**iSCSI Target List**

Name	Action
<div style="display: flex; align-items: center;"> <div style="margin-right: 5px;">▼</div> <span>iqn.1.2012-05.com.nas.iscsi.1111a4.1234</span> </div>	<div style="display: flex; justify-content: space-around; font-size: 1.2em;"> <span>🔍</span> <span>⚙️</span> <span>🗑️</span> </div>
<div style="display: flex; align-items: center;"> <div style="margin-right: 5px;">○</div> <span>1111</span> </div>	<div style="display: flex; justify-content: space-around; font-size: 1.2em;"> <span>⬇️</span> <span>🔍</span> <span>⚙️</span> </div>

You may select the iSCSI hard disk in the target list to mount at the selected iSCSI target. The mounted disk drive will appear in that target list only. You may mount, rename, change path of and delete the iSCSI disk drive in any target list.

**Dismount iSCSI disk list**

Name	Path	Capacity	Action
<input type="checkbox"/> 2222	/mnt/md1	50GB	<div style="display: flex; justify-content: space-around; font-size: 1.2em;"> <span>⬆️</span> <span>🔍</span> <span>⚙️</span> </div>

## 3.4 Permission management

You may create a user, group or public folder and set up the use of Windows AD on this screen.

### 3.4.1 User

This screen displays the list of users. The default administrator account is "admin". The administrator can modify the password and add or delete users.

Add User

Show 10 entries
Search:

	User name	Home	Quota	Actions
<input type="checkbox"/>	admin	md1	N/A	
<input type="checkbox"/>	test1	md1	50GB	

Showing 1 to 2 of 2 entries

To add a new user: click on the Add User tab, fill in the user name and password, assign an exclusive folder and set up the disk space limit to the newly created user. Click on the Setup icon to the right to change the user password and the space limit settings.

Add User
✕

username:  (min 4 characters, no special symbols allowed)

Password:  (min 8 characters)

Repeat password:

Create Home:  Yes  No

Home: md1

User disk space limit  GB

### 3.4.2 Group

The default group is "adm". You may create new or delete existing groups here.

Create New Group

Show 10 entries
Search:

	Group Name	User	Actions
<input type="checkbox"/>	adm	User: admin	
<input type="checkbox"/>	testgroup	User:	

Showing 1 to 2 of 2 entries

To add a new group: click on the Add Group tab, fill in the group name and click on the Setup icon to the right to add users in the newly created group.

**Create New Group**
✕

Group name:

### 3.4.3 Public folder

You may create or delete public folders here.

Create shared folder

Show 10 entries
Search:

	Folder name	Volume	Read Only	Read / Write	Actions
<input type="checkbox"/>	share1	md1/share1			

Showing 1 to 1 of 1 entries ⌵ ⌶

Delete Selected Shared Folder(s)

To add a new public folder: click on the Add Public Folder tab, fill in the group name, set up the user/group permission to the folder in the pop-up user and group menu, click on the Setup icon to the right to change the user/group permission.

**Create SharedFolder**
✕

Shared Name:

Volume: md1

**Select the permissions : share1** ✕

Search:

User	Read Only	Read / Write	Denied Access
admin	<input type="radio"/>	<input type="radio"/>	<input checked="" type="radio"/>
test1	<input type="radio"/>	<input type="radio"/>	<input checked="" type="radio"/>

Showing 1 to 2 of 2 entries ⌵ ⌶

Search:

Group	Read Only	Read / Write	Denied Access
adm	<input type="radio"/>	<input type="radio"/>	<input checked="" type="radio"/>
testgroup	<input type="radio"/>	<input type="radio"/>	<input checked="" type="radio"/>

Note:

Please backup the user/public folder before deleting it if there is data saved in it. Data stored in the user/public folder is removed once the folder is deleted.



### 3.4.4 Window AD

You may select the Domain disk drive mode to switch to the Windows AD mode. Fill in the data including the name of the AD server and the domain administrator and press Apply to use the user list set up in the AD server. You may set up the domain name and its permission for accessing the selected public folder.

Mode:	<input type="text" value="workgroup"/>
Workgroup:	<input type="text" value="WORKGROUP"/>
<input type="button" value="Submit"/>	

Mode:	<input type="text" value="domain"/>
Status:	not join
AD Server Host Name:	<input type="text"/>
AD Server Domain Name:	<input type="text"/>
AD Server NetBios Name:	<input type="text"/>
AD Server KDC Address:	<input type="text"/>
AD Server Admin ID:	<input type="text"/>
AD Server Admin Password:	<input type="text"/>
AD HomeDir:	<input type="text" value="md1"/>
<small>Note: You can set the allowed domain name and the access authority in Share Folder Management.</small>	
<input type="button" value="Submit"/>	

## 3.5 Network service

You may set up the network services including AFP, NFS, FTP and SSH here

### 3.5.1 Apple network

You may enable the AFP service to support the Mac network protocol. It is enabled by default. You may give the AFP name here.

**AFP Service**

Enable AFP service

AFP Name:

### 3.5.2 Linux NFS service

You may set up the NFS access permission here. It is enabled by default.

**Linux NFS Service**

Enable NFS service

You can set the allowed domain name and the access authority in Share Folder Management.

### 3.5.3 FTP

The FTP function is enabled by default with the default communication port 21. You may set up a limit on the number of total FTP connections and the connections by single account (the least number of connections is greater than 2 according to the FTP definition). The overall download and upload speed can also be set up by the administrator.

**FTP**

Enable FTP service

Protocol Type:  FTP (standard)

Port:

Unioade Support:  Yes  No

Note: Note: If your FTP client does not support Unioade, please select No.

All Ftp Connect Limit:

Single Ftp Connect Limit:

Enable FTP Transmission Limit

Max Upload Speed:  KB

Max Download Speed:  KB

You may use the user ID in the permission management as the FTP login account. Upload and download data are placed in specific folder of each user. Users are required to set up an exclusive directory before using the FTP function.

**Note:**

You may change the port for FTP communications to another port. Just keep the FTP port away from the ones normally adopted by other application programs. Take port 80. Do not use this port as it is commonly used by web browsers.

### 3.5.4 SSH

The SSH function is enabled by default with a default communication port 22.

**SSH Service**

Enable SSH service

Port:

## 3.5 Network service

There are four application services here

### 3.6.1 Path for download

You may enable the Bittorrent service to support the BT download service. This function is disabled by default. Its default communication port is 9091. The default path for download files is the public directory of the primary disk. Click on Goto to open the dedicated webpage. See Appendix A for detailed information.

**Bittorrent Service**

Enable

RPC\_PORT:

Download path:

### 3.6.2 File manager

You may enable this function to support the web based File manager. This function is enabled by default with the communication port at 8090. Click on Go to open the dedicated Ajaxplorer webpage. See Appendix B for detailed information.

**Ajaxplorer**

Enable

PORT:

### 3.6.3 Multimedia service

This service includes both iTunes and DLNA options and is enabled by default.

- (1) iTunes media server: default path is "public" and the iTunes software can discover the music files saved here.
- (2) DLNA media server: default path is "public". You may change DLNA and discovery time span (with a default value at 300 seconds).

**iTunes Media Server**

Enable

iTunes Route:  ▼

**DLNA Media Server**

Enable

DLNA Media Server:

DLNA Route:  ▼

Interval:  seconds

**Note:**

A multimedia file can be discovered by the iTunes or DLNA device only if its format is supported by iTunes or DLNA. Files of formats not supported by iTunes or DLNA cannot be discovered by either.

### 3.6.4 Cloud Server (SyncBox)

You may enable this service to access the cloud server service. Please install the cloud server firmware in System Management > Firmware Update page before enabling it. The firmware software is available in the CD included with your product. Please install it before enabling the cloud server service at the default port 8888. Click on Goto to open the dedicated cloud server Syncbox webpage. See Appendix C for detailed information.

**Cloud Server (SyncBox)**

Enable

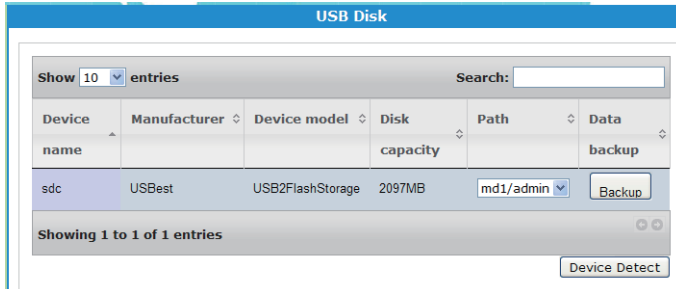
PORT:  (http,8886)

## 3.7 External device

Your SL5640 product can support up to three USB devices at one time. The two types of USB devices are described below.

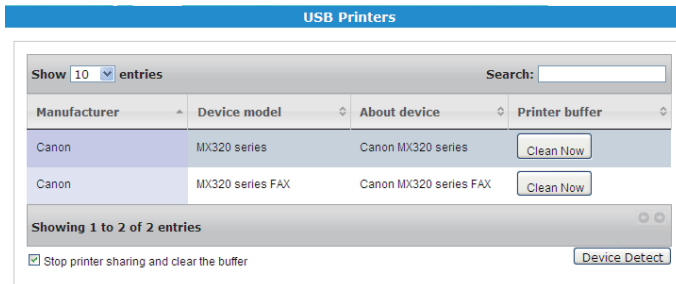
### 3.7.1 USB drive

Insert a USB drive in your SL5640 product, click on Re-discover to display the information of the drive in the list and appear as a folder in the Network Neighborhood. Click on Backup to backup the data in USB drive to the desired path.



### 3.7.2 USB printer

Insert a USB printer in your SL5640 product, click on Re-discover to display its brand name and model number in the setup screen. To use this printer, locate it in the Network Neighborhood and install its driver.



To connect a USB printer as a printer server, please set your SL5640 product's IP address to the static IP to ensure the printer's smooth functioning under the operating system.

## Chapter 4 Appendices

### Appendix A: BT downloads

The BT download function enables a direct file download without going through a PC and enables direct file sharing.

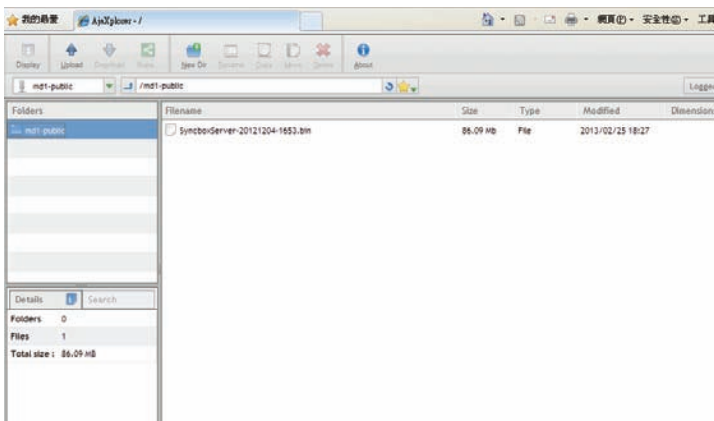


Note:

- You may set up the download and upload speed limit with the setup option at the lower left of the screen.
- Please keep the number of the download torrent under 5 to ensure transmission performance.
- The BT download may cause a heavy impact on the overall system transmission performance. Please limit the download and upload speed and control the number of download torrents at one time according to the actual operating environment.

### Appendix B: AjaXplorer file manager

This function uses the same account and password created in your SL5640 product. Enter this function to download and upload files with this web based Windows Explorer.



Please go to web site at

<http://ajaxplorer.info/documentation/chapter-features/gui-overview/> for further information.

## Appendix C: Cloud server Syncbox

Account setup and page login

Please login and do setup operations with the account "admin" in the Syncbox page if no Syncbox account has been set. Password of the "admin" account is the same as that of the administrator of your SL5640 product.

### Log in to Syncbox

User Name

Password

Stay Signed in

Set up users after logging in the screen. Syncbox users can use their email account as their account name.

### User Manager

Username:    
Use email as the user name

Password:   
Password length of at least six

User List		Select All	Unselect All	Inverse
<input type="checkbox"/>	test@raidon.com.tw			<input type="button" value="Change Password"/>

Log in with the newly set up account.

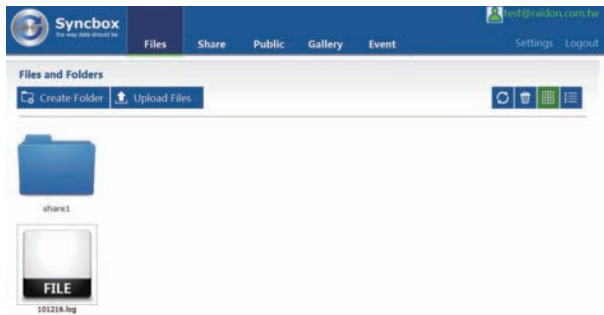
### Log in to Syncbox

User Name

Password

Stay Signed in

You may create folders and upload files to the cloud server once you have logged into the server.



Synchronize with your personal folder

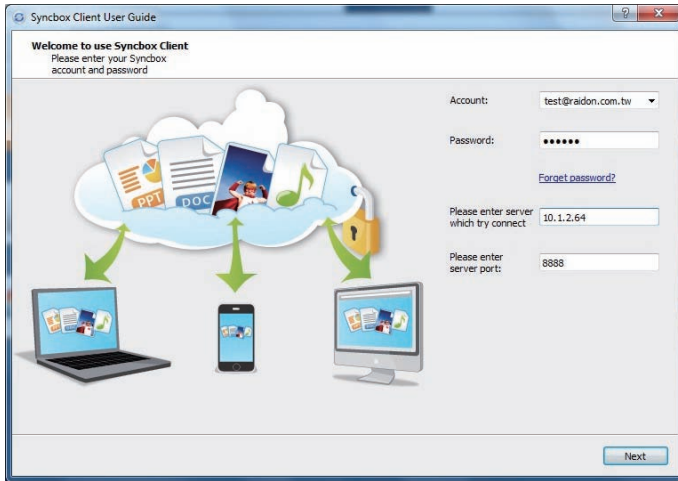
Please download and install the desired client application software for Windows or Mac OS from the home page of the cloud server Syncbox.



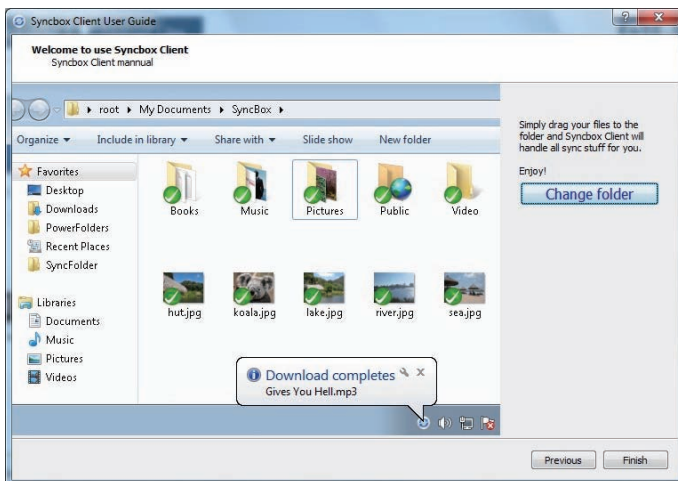


Enter the proper user name and the cloud server IP address.

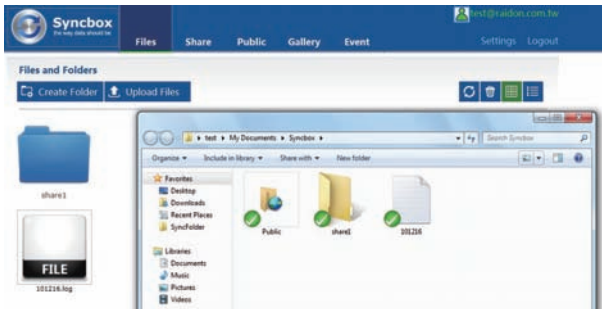
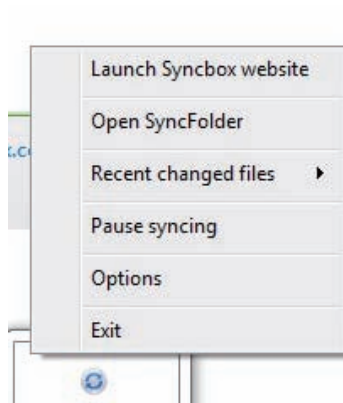
As illustrated in the figure below, the user ID is test@raidon.com.tw and the IP address is 10.1.2.64 (static IP address recommended).



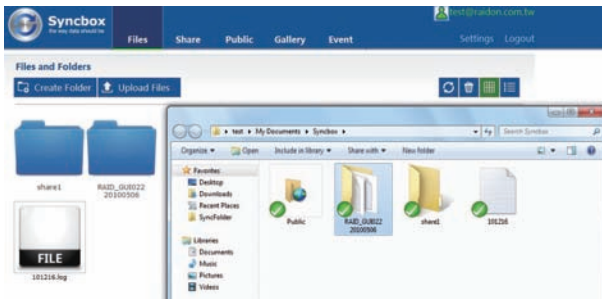
The default folder path is C:\Documents and Settings\User\My Documents\Syncbox. You may change the default name as desired.



Once you have logged in the Syncbox icon display at lower right of screen, open the synchronization folder to synchronize and download files in the cloud server to this folder in your local computer.



Files copied from your computer to this synchronization folder will be uploaded to the cloud server concurrently.



Synchronize with folders in a smart phone:

For iOS users: enter the App Store, locate the Syncbox client software in the Syncbox and install the client software as instructed.

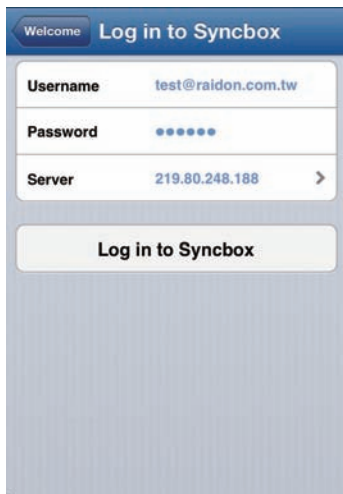
For Android users: enter the Market, locate the Syncbox client software in the Syncbox and install the client software as instructed.



Open the Smartphone Syncbox and enter the account ID created earlier.

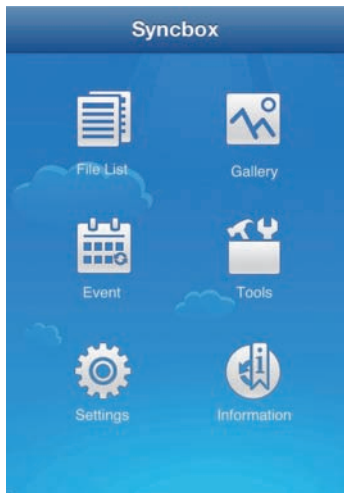


The cloud server IP address shall be a static one.

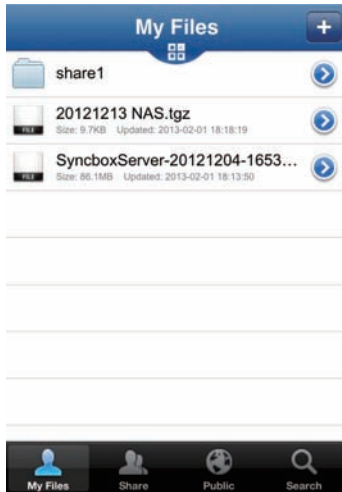


A screenshot of the Syncbox login interface. At the top, there is a blue header with a 'Welcome' button and the text 'Log in to Syncbox'. Below this, there are three input fields: 'Username' with the value 'test@raidon.com.tw', 'Password' with six dots, and 'Server' with the value '219.80.248.188' and a right-pointing arrow. At the bottom, there is a large button labeled 'Log in to Syncbox'.

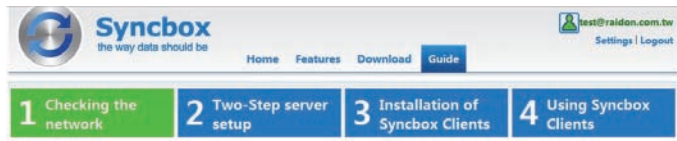
Options in the Smartphone are the same as those in the web page ones, enter File List to view.



Read or upload data.



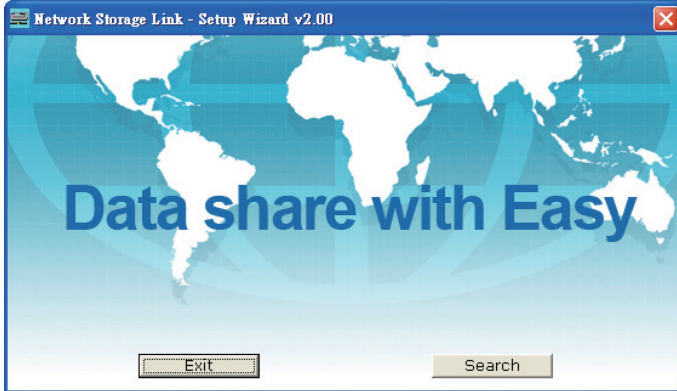
See the user guide available in the cloud server homepage for further instruction information.



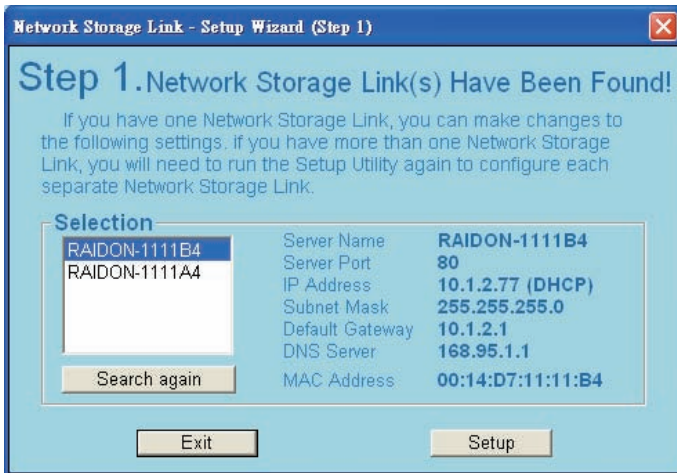
## Appendix D: SearchNAS.exe (for Windows OS only)

In addition to the change system information including the IP address and time of your IP address product through Web GUI, you may use the SearchNAS.exe software for the functions listed below:

1.1 Run SearchNAS.exe software contained in the CD included with your product.



1.2 when you click on the Search icon, the setup software detects and displays the screen as shown below. If multiple SL5640 products are installed in the same network segment, all devices detected will be shown in space to the left.

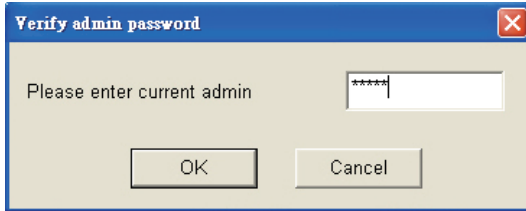


IP address of your SL5640 product displays in this screen. Select desired host and click on Setup to change its IP address.

Note:

When setting up two or more IP address products at the same time, please change the IP address and machine name after one has been set up, then continue with the setup of the next one. This may avoid systems confusion or IP address conflicts or other setup errors caused by duplicate settings.

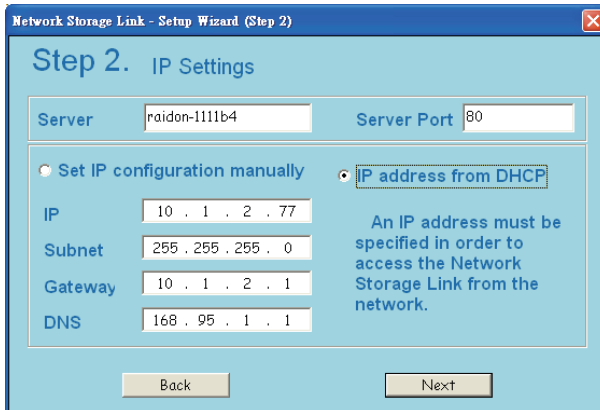
- 1.3 Click on OK after systems setup. You are prompted to enter the administrator password. Please enter the default password "admin" or any new password chosen by you.



**Verify admin password**

Please enter current admin

- 1.4 After logging in the setup screen you may change name of your SL5640 server. To set up a static IP address, click on the Set IP Configuration Manually and enter the required information in sequence (default IP address of your SL5640 product is 192.168.1.20). Click on " IP address from DHCP " to get the IP address automatically assigned by the DHCP server.



**Network Storage Link - Setup Wizard (Step 2)**

### Step 2. IP Settings

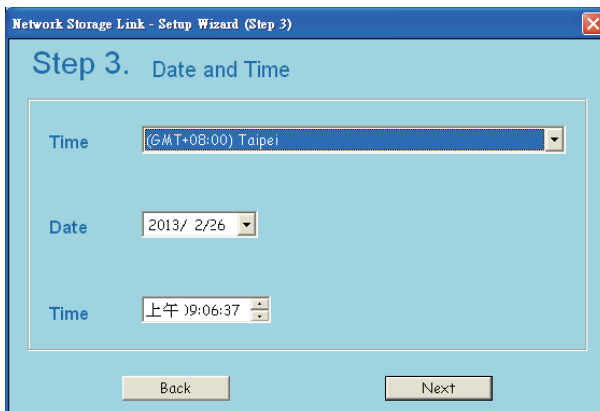
Server  Server Port

Set IP configuration manually
  IP address from DHCP

IP   
 Subnet   
 Gateway   
 DNS

An IP address must be specified in order to access the Network Storage Link from the network.

- 1.5 Click on Next to set up the date and time, after setup on this screen is completed.



**Network Storage Link - Setup Wizard (Step 3)**

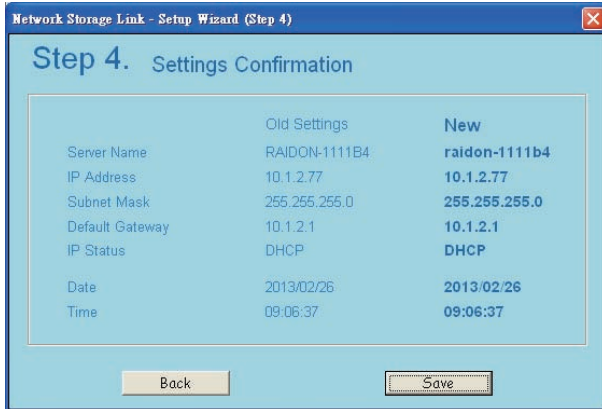
### Step 3. Date and Time

Time

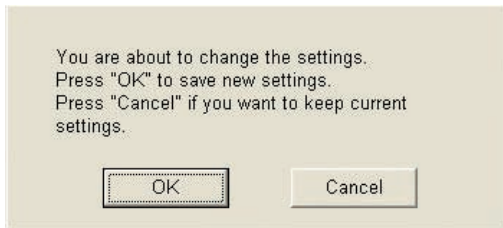
Date

Time

1.6 Click on Next after date and time are set and the confirmation screen displays. Click on Save to store your settings if all information shown on the screen is valid.



1.7 The system prompts you to confirm changing to new settings after the option Save was selected. Click on OK to continue and Cancel to discard the changes that you made.



1.8 The system automatically returns to the first screen. Please follow the steps described above to change to other systems settings or click on Exit if all the desired changes have been made.

**Note:**

1. The system may take about 2 minutes to start up your SL5640 product after a system power on. Before this, your SL5640 product cannot be found.
2. If your SL5640 product is set to get the IP address assigned by the DHCP server and failed to do so, it will use as its default IP address 192.168.1.20 instead. Please set your PC to the same network segment 192.168.1.xxx to enter the SL5640 log in window.
3. When using your SL5640 product for the first time, you are required to select one standalone hard disk or create one disk array before doing other setup operations.