

MODEL NO. : LSD-6725

□ SPECIFICATION □

DISPLAY SCREEN	SIZE	5.7 Inch
	ACTIVE AREA	115.2(W) x 86.4 (H)mm
	ELEMENT	COLOR TFT LCD 16.7M(24Bit)
	RESOLUTION	640(W) x RGB x 480
	DOT PITCH	0.06 (W) x 0.18 (H)mm
◆ VIDEO INPUT	NTSC and PAL System	
NTSC	f_H : 15.75 Khz	f_V : 60 Hz
	f_C : 3.58 MHz	
PAL	f_H : 15.625 Khz	f_V : 50 Hz
	f_C : 4.43 MHz	
◆ SDI FORMAT SUPPORT	480i, 525/29.97 NTSC, 625/25 PAL	720P50, 720P59.94, 720P60, 1080i29, 1080i30
◆ INPUT CONNECTOR	Video In x2 RCA , Video Out x1 RCA	Audio In x1 RCA, Audio Out x1 RCA
	SDI In x 1 BNC	SDI Out x 2 BNC
◆ OPTICAL RISE TIME/FALL TIME	Tr=15 msec,	Tf=35 msec
◆ BACKLIGHT	LED (WHITE)	
◆ POWER CONSUMPTION	DC 12V 400mA, 5.8W	DC 24V 200mA, 5.8W.
◆ OPERATING TEMPERATURE	-10°C ~ 60°C	
◆ STORAGE TEMPERATURE	-20°C ~ 70°C	
◆ BRIGHTNESS	450 cd/m ²	
◆ CONTRAST	350 : 1	
◆ VIEWING ANGLE	Vertical ± 40° , Horizontal : ± 60°	
◆ LCD SCREEN	124.7 x 100 x 10.8 (mm)	
◆ OVERALL DIMENSION	231.12(W) x 164.0(H) x 100.86(D)	
◆ WEIGHT	2500 ± 100 g	

□ FEATURES □

High Definition SDI Input
LED Back Light , Low Power Consumption
DC/DC DC/AC Video Decoder All In One
NTSC/PAL Video Input Auto-Switch
Up/Down , Left/Right, Image Reverse Function
12V ~ 24V Wide Operating Voltage
TALLY Indicator

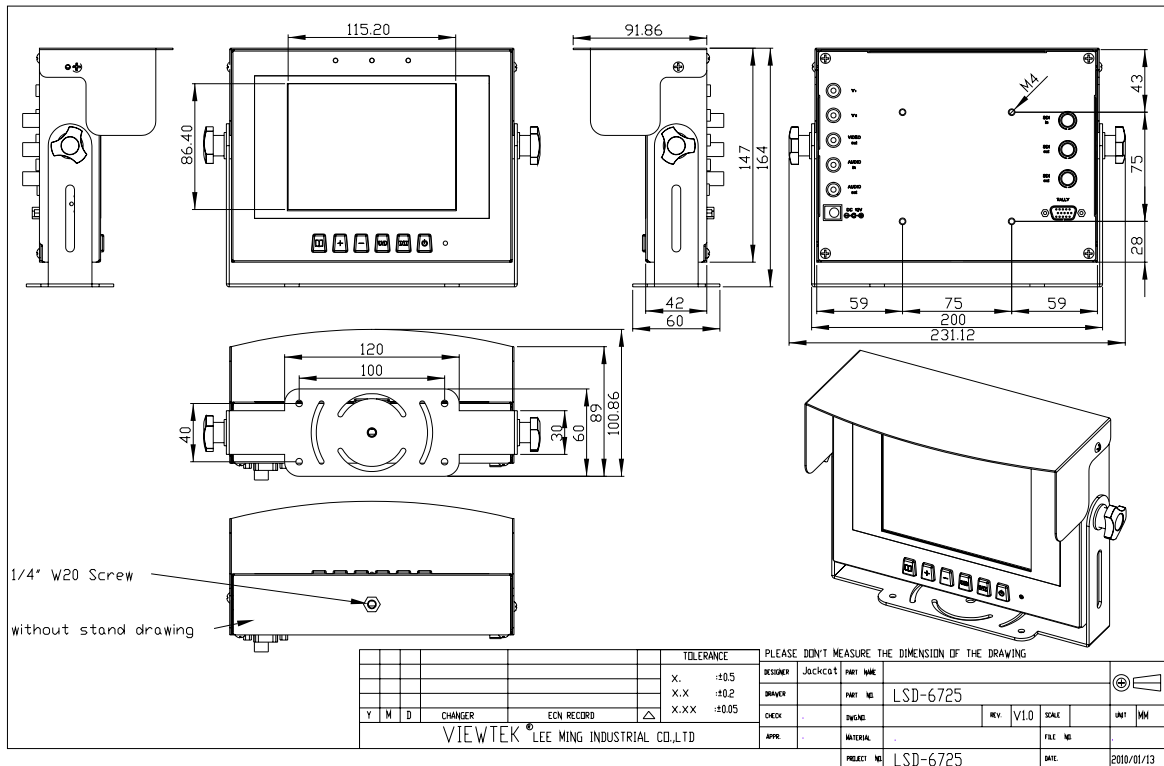
□ APPLICATIONS □

- ◆ Security
- ◆ Broadcasting
- ◆ Video Game
- ◆ Door Phone
- ◆ Video Phone
- ◆ Portable TV
- ◆ Center Control Room
- ◆ Instrument Display
- ◆ High Performance Display

□ TALLY LED CONTROL □

GREEN	RED	YELLOW	GND
PIN 1	PIN 2	PIN 3	PIN 4,5

□ MECHANICAL DRAWING □



□ Record of Revision □

Version and Date	Page	Old Description	New Description	Remark
V.1.2 ,0113-2010	3	LSD-6725 New model	LSD-6725 New Model	